

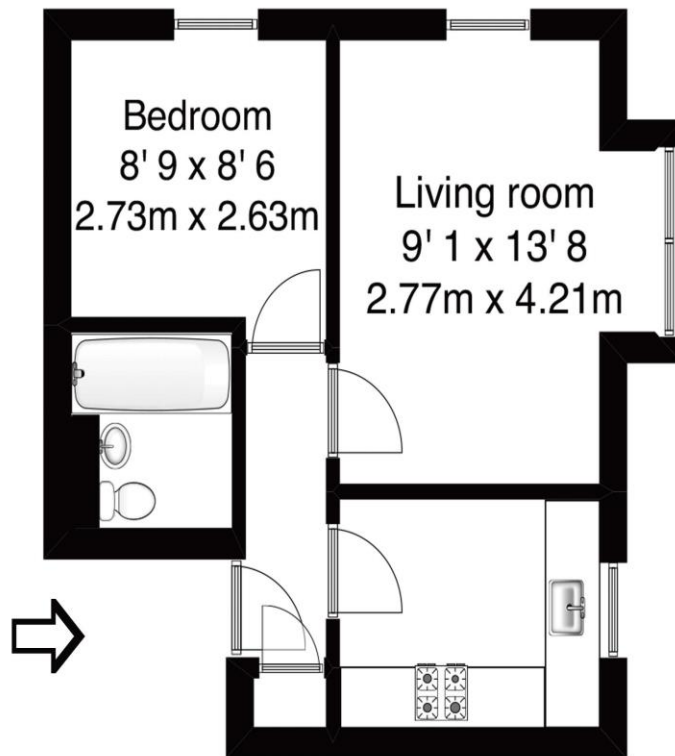


**10 Findon Court Row Town Addlestone Surrey KT15 1BD**

**£1250pcm + Initial deposit**



Approximate gross internal floor area 344 Sq Ft 32 Sq M



Whilst every attempt has been made to ensure the accuracy of the floor plan contained here, measurements are approximate and no responsibility is taken for any error, omission, or mis-statement. The plan is for illustrative purposes only and should be used as such by any prospective purchaser.

A lovely one-bedroom top floor apartment, set in this popular, nicely maintained block. Positioned within the Spinney Hill area of Row Town, Addlestone within each reach of the M25 and local village shops. The flat has a separate kitchen, bright dual aspect living room and double bedroom. Offering residents parking, unfurnished and available from the 29th May 2024. EPC Rating C



**AGENTS NOTES:** These details do not constitute any part of an offer or contract. In issuing them we do not have any authority to give any warranty or representation whatsoever in respect of this property. These details are provided without any responsibility on our part or the part of the vendors. No statements in these details are to be relied upon as representations of fact and purchasers should satisfy themselves by inspection or otherwise as to the accuracy of the statements contained therein.

**Equipment:** We have not tested the equipment or central heating system mentioned in these particulars and purchasers are advised to satisfy themselves as to their working order and condition.

**Measurements:** Great care is taken when measuring but measurements should not be relied upon for ordering carpets, equipment, etc.